

# MONTHLY MEMBERSHIP PROGRESS REPORT

LOCATION HUNGARY

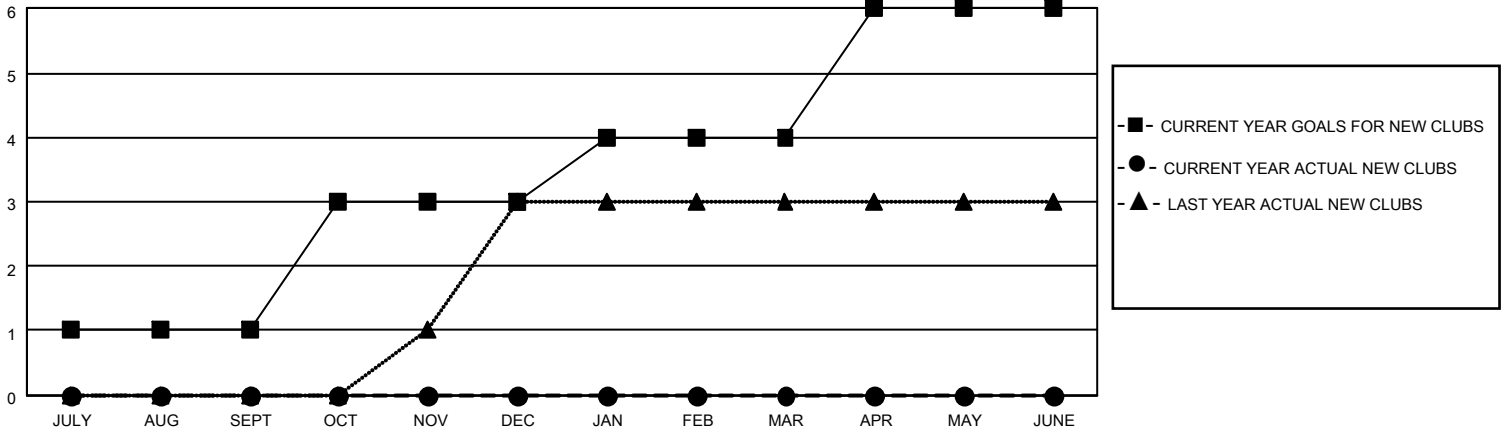
District 119

Results as of: 5/31/2022

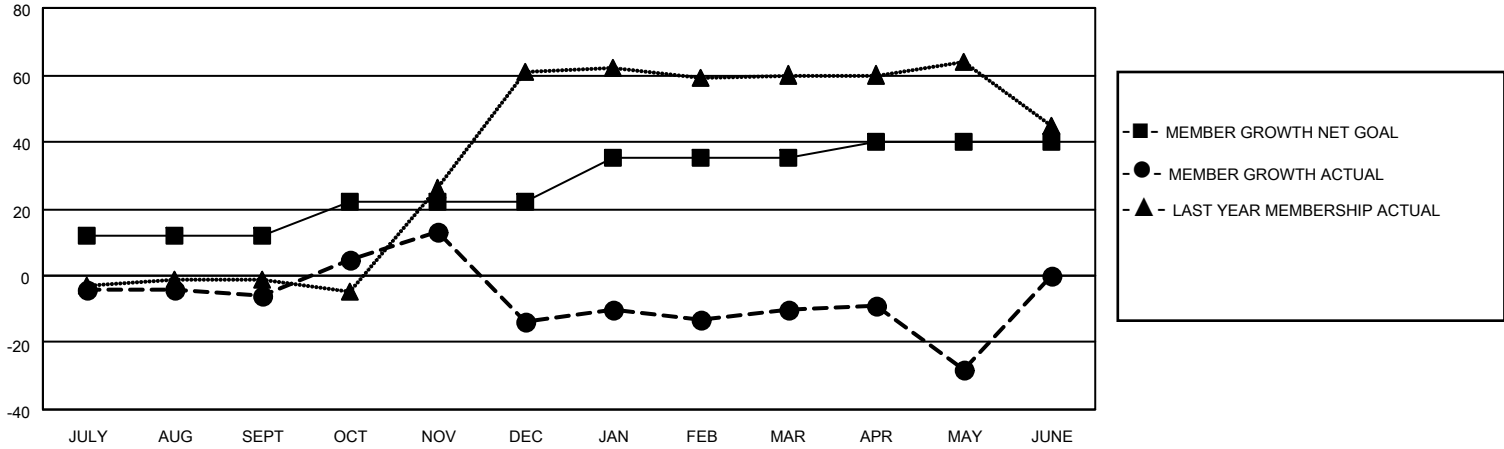
Clubs			
RESULTS FOR 2021-2022			
QUARTER	NEW CLUB GOAL	NEW CLUBS	DROPPED CLUBS
JULY/AUG/SEPT	1	0	0
OCT/NOV/DEC	2	0	1
JAN/FEB/MAR	1	0	0
APR/MAY/JUNE	2	0	0

Members			
RESULTS FOR 2021-2022			
QUARTER	MEMBER GROWTH NET GOAL	MEMBER GROWTH ACTUAL	DROPPED MEMBERS ACTUAL (including transfers)
JULY/AUG/SEPT	12	6	10
OCT/NOV/DEC	10	26	34
JAN/FEB/MAR	13	14	9
APR/MAY/JUNE	5	7	25

**GOALS AND ACTUAL NEW CLUBS CUMULATIVE**



**GOALS AND ACTUAL MEMBERS CUMULATIVE**



DROPPED CLUBS: 1	
<b>DROPPED MEMBERS</b>	
DECEASED	5
CLUB CANCELLED	13
OTHER	60
<b>TOTAL</b>	<b>78</b>

21 CLUBS OF 44 ADDED 1 OR MORE NEW MEMBERS

[CLICK HERE FOR CUMULATIVE MEMBERSHIP DATA](#)

<u>GENDER DISTRIBUTION</u>	
MALE	526 (58.51%)
FEMALE	370 (41.16%)
NON BINARY	0 (0.00%)
PREFER NOT TO ANSWER	3 (0.33%)
<b>TOTAL FAMILY UNIT MEMBERS</b>	<b>173</b>
<b>FAMILY MEMBERS PAYING HALF DUES</b>	<b>88</b>